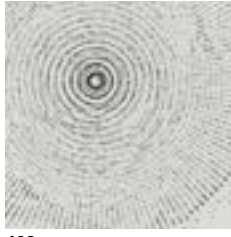


Grafiche per boiserie KREA e ante FORTEBRACCIO

Graphic designs for KREA wall panelling and FORTEBRACCIO doors / Decoraciones para boiserie KREA y puertas FORTEBRACCIO



402



403



407



409



411



412



413



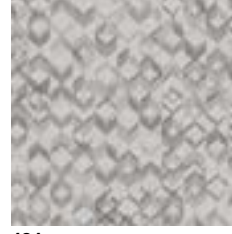
415



420



422



424



430



431



433



435



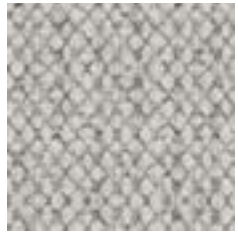
436



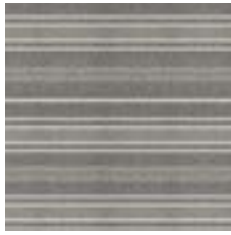
437



438



451



452



453



460

Grafiche per ante, ante KAOS, schienali e pensile Z

Graphic designs for doors, KAOS doors, back panels and Z wall units / Decoraciones para puertas KAOS, traseras y colgante Z



902



909



911



913



916



924



933



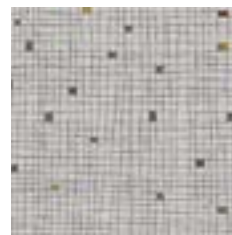
935



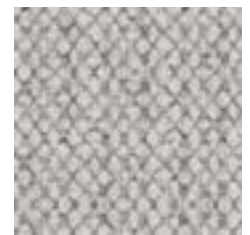
936



937



938



951



952



953



960

Finiture

Finishes / Acabados

Le finiture e i colori sono indicativi e possono subire variazioni dovute alla tecnica di stampa.
Finishes and colours are purely indicative and may vary from the versions shown due to printing inaccuracies.
Los acabados y los colores son indicativos y pueden sufrir variaciones debidas a la técnica de impresión.

Essenza

Wood / Madera



Frassino oriente
Oriente Ash
Fresno oriente



Rovere termocotto
Heat-treated oak
Roble termotratado



Rovere carbone
Coal oak
Roble carbón

Essenza nodato

Knotted wood veneers / Madera con nudos



Nodato naturale
Natural knotted finish
Nudos natural



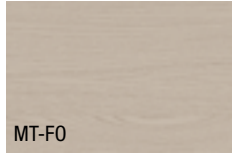
Nodato chiaro
Light knotted finish
Con nudos claro



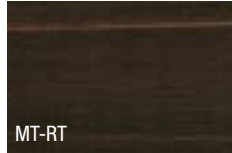
Nodato scuro
Dark knotted finish
Con nudos oscuro

Materico essenza

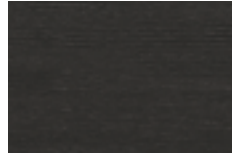
Textured wood / Texturizado madera



Frassino Oriente
Oriente Ash
Fresno oriente



Rovere termocotto
Heat-treated oak
Roble termotratado



Rovere carbone
Coal oak
Roble carbón

Materico nodato

Knotted textured finish / Texturizado con nudos



Nodato naturale
Natural knotted finish
Nudos natural



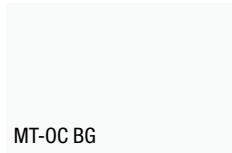
Nodato chiaro
Light knotted finish
Con nudos claro



Nodato scuro
Dark knotted finish
Con nudos oscuro

Materico opaco

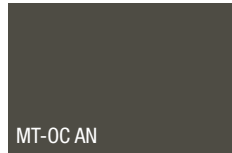
Matt textured finish / Texturizado mate



Bianco gesso
Chalk white / Blanco yeso



Madreperla
Mother of pearl / Madreperla



Antracite
Anthracite / Antracita

Materico poro aperto

Textured open pore / Texturizado poro abierto



Bianco gesso
Chalk white / Blanco yeso



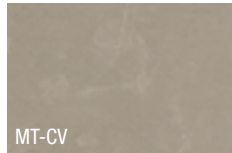
Madreperla
Mother of pearl / Madreperla

Materico cemento

Textured cement / Texturizado cemento



Cemento chiaro
Light cement
Cemento claro



Cemento cava
Cava cement
Cemento cava



Cemento scuro
Dark cement
Cemento oscuro

Materico intreccio

Textured "Intreccio" / Texturizado trenzado



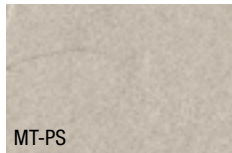
Intreccio scuro
Dark Intreccio
Entrelazamiento oscuro



Intreccio chiaro
Light Intreccio
Entrelazamiento claro

Materici

Textured / Texturizado



Piasentina
Piasentina / Piasentina



Graniglia
Gravel grey / Gravilla



Paglia bronzo
Bronze straw / Madreperla



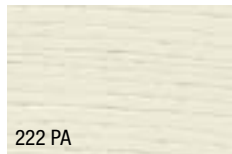
Paglia grigio
Grey straw / Paja gris

Laccati poro aperto

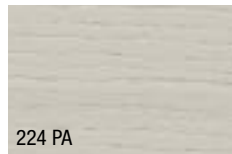
Open-pore lacquer / Lacado poro abierto



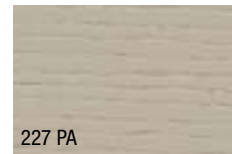
Bianco gesso
Chalk white / Blanco yeso



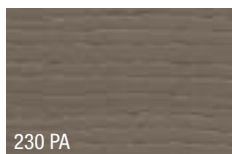
Panna
Cream / Leche



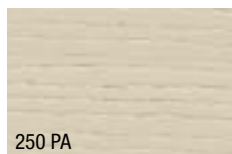
Madreperla
Mother of pearl / Madreperla



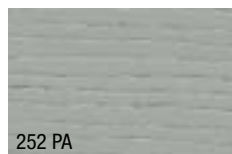
Hot
Hot grey / Gris asfalto oscuro



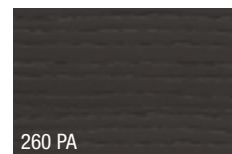
Grigio Piacenza
Piacenza grey / Gris Piacenza



Canapa
Hemp / Caano



Pomice
Pumice / Pomez



Antracite
Anthracite / Antracita

Laccati opachi e lucidi / Matt and gloss lacquers / Lacados mates y brillantes

121 Bianco gesso Chalk white / Blanco yeso	122 Panna Cream / Nata	123 Avorio Ivory / Marfil	124 Madreperla Mother of pearl / Madreperla	127 Hot Hot grey / Gris asfalto oscuro	128 Smoke Smoke / Smoke
130 Grigio Piacenza Piacenza grey / Gris Piacenza	131 Nero Fumo Smoke black / Negro humo	134 Rosso Red / Rojo	142 Celeste Light blue / Celeste	145 Pink Pink / Color de rosa	147 Oliva Olive / Oliva
148 Arancio Orange / Naranja	150 Canapa Hemp / Cáñamo	152 Pomice Pumice / Pómez	153 Verde muschio Moss green / Verde musgo	154 Blu avio Airforce blue / Azul cielo	155 Carta da zucchero Baby blue / Azul niño
156 Bordeaux Burgundy / Burdeos	157 Pesca Peach / Melocotón	158 Zafferano Saffron / Azafrán	159 Salvia Sage / Salvia	160 Antracite Anthracite / Antracita	

Vetri colorati lucidi e satinati (vetri satinati non disponibili per collezione Atlante)

Gloss and satin coloured glass (satin glass is not available for the Atlante collection) / Cristales en colores brillantes y satinados (cristales satinados no disponibles para colección Atlante)

321 Lucido Gloss - Brillante	421 Satinato Satin - Satinado	322 Lucido Gloss - Brillante	422 Satinato Satin - Satinado	323 Lucido Gloss - Brillante	423 Satinato Satin - Satinado	324 Lucido Gloss - Brillante	424 Satinato Satin - Satinado	327 Lucido Gloss - Brillante	427 Satinato Satin - Satinado	328 Lucido Gloss - Brillante	428 Satinato Satin - Satinado
Bianco gesso Chalk white / Blanco yeso	Panna Cream / Nata	Avorio Ivory / Marfil	Madreperla Mother of pearl / Madreperla	Hot Hot grey / Hot	Smoke Smoke / Smoke						
330 Lucido Gloss - Brillante	430 Satinato Satin - Satinado	331 Lucido Gloss - Brillante	431 Satinato Satin - Satinado	334 Lucido Gloss - Brillante	434 Satinato Satin - Satinado	342 Lucido Gloss - Brillante	442 Satinato Satin - Satinado	345 Lucido Gloss - Brillante	445 Satinato Satin - Satinado	347 Lucido Gloss - Brillante	447 Satinato Satin - Satinado
Grigio Piacenza Piacenza grey / Gris Piacenza	Nero Fumo Smoke black / Negro humo	Rosso Red / Rojo	Celeste Light blue / Celeste	Pink Pink / Color de rosa	Oliva Olive / Oliva						
348 Lucido Gloss - Brillante	448 Satinato Satin - Satinado	350 Lucido Gloss - Brillante	450 Satinato Satin - Satinado	352 Lucido Gloss - Brillante	452 Satinato Satin - Satinado	353 Lucido Gloss - Brillante	453 Satinato Satin - Satinado	354 Lucido Gloss - Brillante	454 Satinato Satin - Satinado	355 Lucido Gloss - Brillante	455 Satinato Satin - Satinado
Arancio Orange / Naranja	Canapa Hemp / Cáñamo	Pomice Pumice / Pómez	Verde muschio Moss green / Verde musgo	Blu avio Airforce blue / Azul cielo	Carta da zucchero Baby blue / Azul niño						
356 Lucido Gloss - Brillante	456 Satinato Satin - Satinado	357 Lucido Gloss - Brillante	457 Satinato Satin - Satinado	358 Lucido Gloss - Brillante	458 Satinato Satin - Satinado	359 Lucido Gloss - Brillante	459 Satinato Satin - Satinado	360 Lucido Gloss - Brillante	460 Satinato Satin - Satinado		
Bordeaux Burgundy / Burdeos	Pesca Peach / Melocotón	Zafferano Saffron / Azafrán	Salvia Sage / Salvia	Antracite Anthracite / Antracita							

SOLO DOVE PREVISTO Only where this option is specified - Solo cuando se especifica esta opción

Specchi Mirrors / Espejos

381 Specchio argentato Silver mirror / Espejo plateado	382 Specchio bronzo Bronze mirror / Espejo bronceado	383 Specchio grigio Grey mirror / Espejo gris	393 Specchio grigio satinato Satin grey mirror Espejo gris satinado
---	---	--	---

Finiture metallo Metal finishes / Acabados metal

Antracite Anthracite Antracita	Laccati opachi Matt lacquers Lacados mates
---	---

Solo per collezione Sistema Armadi

Only for the Wardrobes System collection
Solo para colección Sistema Armario